

SKULL ROCK

Unearthing the dark nature within.



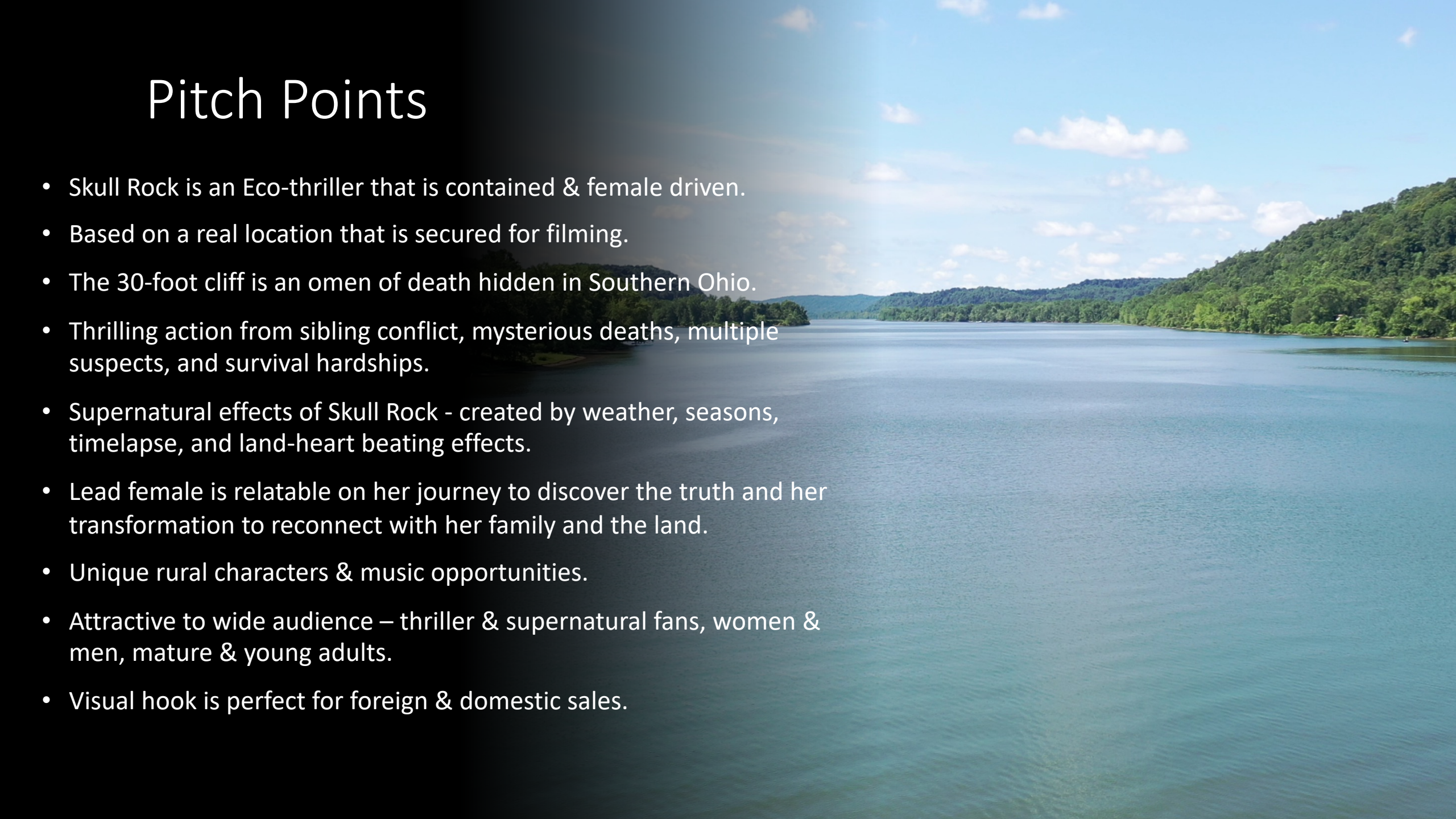


Logline

Siblings face off over their land fracking contract that has awakened a dark force of nature at Skull Rock.

Pitch Points

- Skull Rock is an Eco-thriller that is contained & female driven.
- Based on a real location that is secured for filming.
- The 30-foot cliff is an omen of death hidden in Southern Ohio.
- Thrilling action from sibling conflict, mysterious deaths, multiple suspects, and survival hardships.
- Supernatural effects of Skull Rock - created by weather, seasons, timelapse, and land-heart beating effects.
- Lead female is relatable on her journey to discover the truth and her transformation to reconnect with her family and the land.
- Unique rural characters & music opportunities.
- Attractive to wide audience – thriller & supernatural fans, women & men, mature & young adults.
- Visual hook is perfect for foreign & domestic sales.





Overview

- ECO-THRILLER
- REAL OHIO LOCATION
- NATURAL EFFECTS
- CHARACTER DRIVEN
- BASED ON HISTORY OF AREA
- NATURE DOCUMENTARY FOOTAGE
- FOUNDED ON PLANT & HUMAN BIOLOGY

Story Outline



- After the mysterious death of their father, Joan returns to the Land to settle with her siblings over fracking developments, but when her sister is found dead in the river, they are forced to reckon with a darkness rooted in Skull Rock.
- Follows Joan on her journey from her seemingly successful detached life, as she is thrust back to the wilderness and her dysfunctional sibling dynamics. It forces her to reexamine what is essential in relationships to others and the earth itself.
- Joan's brother Sam, falls into the obsession over Skull Rock's influence as she investigates the tangible suspects – neighbors and gas workers. When Keva, their free-spirited little sister, dies, Peter, the best friend who was included in the will, is heartbroken and distant - abandoning them in their grief.
- Joan, Sam, & Peter toil through their hardships and fight for what they want –retribution, justification, & validation. They are challenged by each other, society, and nature.
- Overcoming selfish motivations, they must explore love, grief, beliefs, and sacrifice; rendering everyone, including the land, transformed.

World

- Skull Rock is hidden at the Land, a remote property in Southern Ohio.
- Exploiting the natural changes and weather events using long term time-lapse, vast aerial views, and intimate angles creates a visceral experience of the power and will of the Land.
- A blend of nature documentary and supernatural thriller, it is grounded in realism with endearing emotional connections and heart pounding suspense.

The Gaia Hypothesis: The Earth lives as one sacred living being





Characters

- **Joan**, the level-headed everywoman. Cultivated, Coastal land developer, early 40's.
 - Wants justice for her father and sister's deaths. Determined to uncover the culprit. She is met by a lack of solid answers, loneliness, and the dark influences of the land. She puts everyone at risk by believing her way is infallible.
- **Sam**, the big-hearted older brother. Struggling alcoholic, out-of-work, mid 40's.
 - He wants to protect his sisters by rooting out Skull Rock as a real threat. Thwarted by his obsession and vulnerability to temptation by overindulgence and inaction.
- **Peter**, the lifelong best friend. A backwoodsman turned businessman, 40's.
 - Unable to shake his imposter syndrome. He wants a valid claim to the property and profits, as well as acceptance into the family. Unrequited lover of Keva. Forced to face rejection, he fights against the forces of evil for redemption.
- **Keva**, the free-spirited little sister. Reflective social media beauty but pathless, mid-30s.
 - She wants to preserve the land and expand her perceptions to show respect for the power of the property. Her beauty turned to vanity, twisted by selfish urges in the shadow of Skull Rock leads to her demise.
- **Skull Rock**, the 30ft stone omen of death. Focal point of nature's dark energy, Ageless.
 - Growing in strength over time, it awakes when the balance is disrupted. Twisting time and impulses, setting the stage for decay; only quieted by total submission.



Themes

Man vs. Nature / Good vs. Evil / Self vs. Whole

Driven by the unrelenting power of nature, the nonstop march of time, the elusive experience of loss, and survival through perseverance.

Explores land ownership, rights to exploit, and the imprint left behind.

Greed, envy, pride, and fear contend with the force of forgiveness, courage, sacrifice, and love.





Tone

Unique blend of nature documentary effects and grounded realism in emotional connection.

It plays at the pace of a psychological thriller with the heart of a family drama.

An undercurrent of supernatural and historical components.

It promises a breathtaking and believable cinematic experience with a message of conservation.

Synopsis

Joan, a rising coastal land developer in Florida in her 40s, is focused on growing her success with streamlined control and a solitary lifestyle. An anchoring connection remains to her father, Abe, who reaches out as a fracking survey team arrives, and unknowingly has Joan authorize a worker to chop down the tree at the base of Skull Rock; having remained hidden, it now sends a ripple of echoes into the dark valley in which it lies.

Joan is suddenly disrupted when contacted by the local sheriff who has found her father's body. Absorbing the loss, she must meet with her estranged siblings at their remote Ohio property to negotiate the terms of a pending fracking contract. The tensions rise as disagreements mount over proceedings and Abe's cause of death. Still, none of them know about Skull Rock.

That night, Keva, the free-spirited younger sister, casts doubt on the fracking, pushing to stop operations. Peter, the long-time family friend and property caretaker as a teen, secretly involved with Keva, remains neutral despite his claim to the earnings. Sam, the vulnerable older brother, is more interested in the locals' superstitious stories about their place. Joan, determined that there is foul play involved, suggests they hire someone to investigate. By early morning Keva is found submerged in the river, her body tangled into the roots of a towering sycamore – she cannot be revived.

Heartbroken, Joan vows to remain until the culprit is unearthed, single-mindedly searching for someone to blame. Peter runs from his grief and hides away from the Land, abandoning his responsibilities to the family. Sam pushes deeper into the legend of Skull Rock, spiraling into alcoholism and conspiracy theories. Descending into Winter, the presence of a dark unbalance emanates from the hidden valley of Skull Rock, as it slowly takes its toll on them all.

Joan digs through every possibility from the locals to the gas company members, even uncovering the body of a missing survey worker. At odds with her brother and the sheriff, Joan's clues don't amount to a viable suspect. With nowhere left to turn Joan is forced to look to the land, at the history of Ohio frontiersmen and natives, the fracking, the biology of the earth – hunting until the ground slips from her feet, careening her into Skull Rock.

Before she can tell Sam, he's given over to the distortions and is pulled into the forgotten well on their property. Joan works to rescue him, bringing him to the hospital, his fate now tied in her mind to the effects of Skull Rock. Coming down to visit Sam in the hospital, Peter returns to the land. His arrival reveals his involvement in her father's death to Joan, who presses him to confess. Abandoning reason Joan knocks him out and drags him to the ledge of Skull Rock for a final reckoning.

Fates hanging in the precipice- Joan and Peter wrestle on the edge with their last chance to end the cycle of darkness that is permeating from Skull Rock to the roots of them and their land... before it spreads beyond their borders.





Comparison Casting

- Joan: Jodi Comer
- Sam: Matthew McConaughey
- Keva: Emilia Clarke
- Peter: Milo Ventimiglia

Cast of eclectic characters, offering rich opportunities for exciting casting.



Abe: Michael Douglas
 Penelope: Connie Britton
 Danny: W. Earl Brown
 Lawyer: Steve Buscemi



Henry: Tom Hardy
 Charlotte: Gal Gadot
 Kate: Frances McDormand
 Bonnie: Kathy Bates

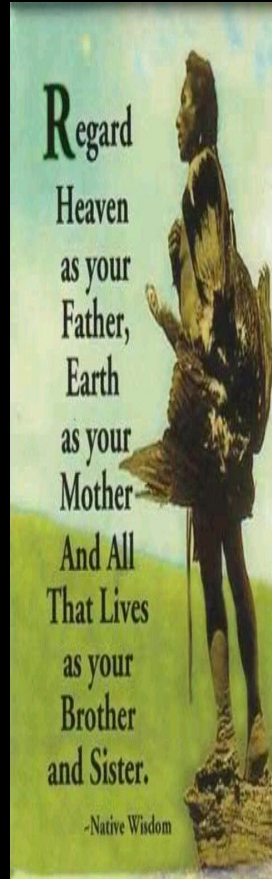
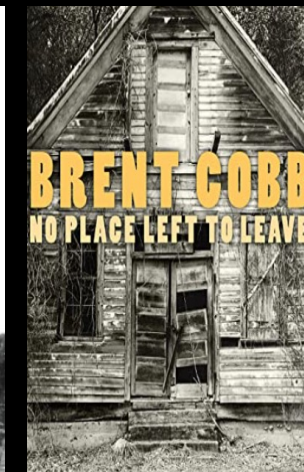
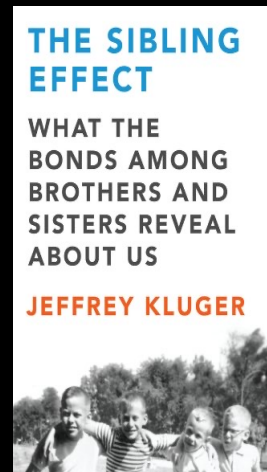
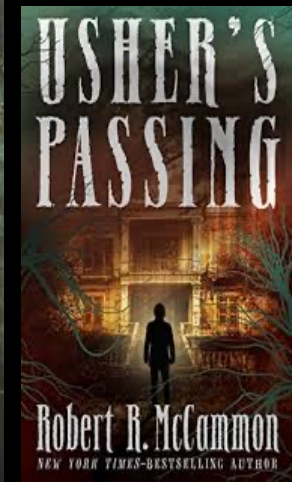
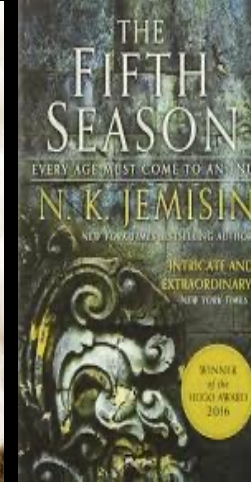
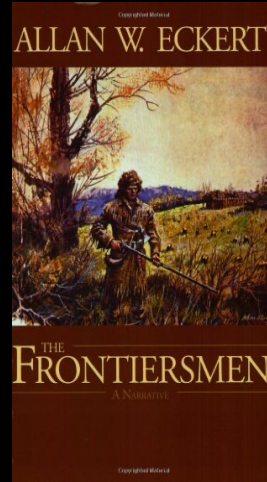
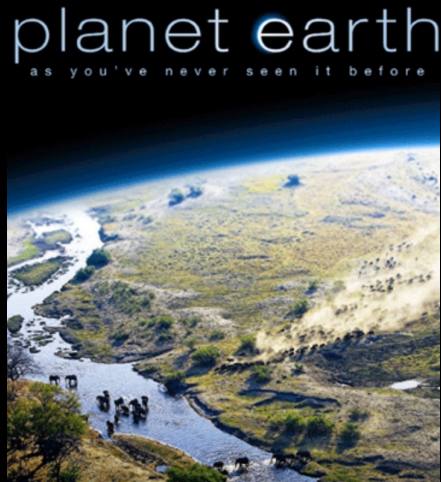
Related Content



- Skull Rock is Haunting of Hill House meets Wild River and Winter's Bone.
- Enthralling locations, interesting characters and gripping action.



Sources



Screenplay Competitions

Skull Rock is a tight thriller that has been thoroughly developed, including extensively workshopped with Sarah Cornelius, producer at the award-winning Whitewater Films.



Wonderfully unique concept that intertwines family drama and supernatural/thriller genres effortlessly. The character-driven plot is compelling and the ability to intertwine multiple timelines is exceptional. The well-written dialogue and relationships between the primary characters are highlights of the script.

- Heart-pounding, suspenseful, keeps us on our toes
- A lot of commercial potential, appeal to large audience
- Tone is just subtle enough to blur the lines between supernatural and realism
- The climax in which Joan and Peter face off at Skull Rock is excellent



Message

- Skull Rock is a timeless story of human detachment from our environment and each other.
- Using the sibling relationship taps into the understanding of universal connections between people as brothers and sisters looking out for one another.
- Breaks the barrier of the thriller genre with strong moral and content.
- Expressed with the raw footage of real locations and subtle natural acting.



Producibility

- The screenplay is devised for efficiency and ease of production based on the property details,.
- Stunning B-roll nature footage is being collected that is critical to the story. The use of natural effects from weather phenomena and Ohio's seasonal changes are devices employed to create the influence of Skull Rock.
- Low Budget, pending attachments of high value talent and accredited talent, with wide audience interest, makes this a very attractive investment.
- All locations secured and uninhabited. Onsite Housing, ATVs, Kayaks & Storage. Skilled local crew available.
- Skull Rock is a unique take on the successful framework of "A Monster in the House", highlighting a rural demographic that brings a fresh view and sound to audiences. Including the Ohio history of the location with the science of nature, it becomes a haunting look at how we are connected.

LOW BUDGET FEATURE FILM

- Preliminary Budget: 2.5-5M
- Ohio Motion Picture Tax Credit: Refundable Tax Credit of 30%
- Non-Production City Rates & Onsite Housing
- Attachments Pending: High Value Leads & Accredited Director



Screenwriter

- I am passionate about this story because we now face the power of nature with only each other to rely on.
- Emerging screenwriter, developed with producer Sarah Cornelius from Whitewater Films. Studied with Playwrights Charles Smith & Qui Nguyen at OU.
- Upcoming Feature scripts: DELAYED NOT DENIED, FATHER AGAINST FENTANYL, & COUCHSURFING: A LOVE STORY.
- Owner of filming locations, strong collaborator with over 20 years of experience, stout environmentalist, and Ohio native.



LAURA RAUH

- **SCRIPT DEVELOPMENT** with Sarah Cornelius at **WHITEWATER FILMS**

Producer

- President of PRICE PRODUCTIONS
- Recent Films include BANDIT with Josh Duhamel and Mel Gibson
- Produced 6 films in 2022 and a slate of 6 films for 2023
- Proven packaging & financing record
- Motivated and efficient execution of film production



KELI PRICE



Contact:

Laura Rauh

Laura@RiverlandFilms.com

Keli Price

Keli@PriceProductionsldt.com

Thank you for considering Skull Rock
and viewing the location at
www.RiverlandFilms.com

